



OPTIMA Dry Lining System

High Performing, Easy & Quick

INSTALLER GUIDE



ISOVER
SAINT-GOBAIN

Sustainable Insulation Solutions



Floor
Measure distance out from wall – thickness of the insulation being used + 20mm



Use chalk line to mark out line for floor U-channel – line marked is to front of U-channel



Fix to floor through pre drilled holes in U-channel



Ceiling
Measure distance out from wall – thickness of the insulation being used + 20mm



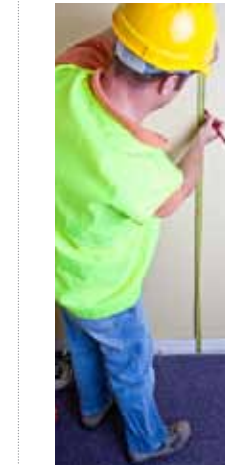
Use chalk line to mark out line for floor U-channel – line marked is to front of U-channel



Ensure sufficient grounds are established



Fix to ceiling through pre drilled holes in U-channel



Measure 1.35m from floor

STEP 1

INSTALLERS GUIDE - OPTIMA

STEP 2

INSTALLERS GUIDE - OPTIMA

STEP 3

INSTALLERS GUIDE - OPTIMA

STEP 4

INSTALLERS GUIDE - OPTIMA

STEP 5

INSTALLERS GUIDE - OPTIMA

STEP 6

INSTALLERS GUIDE - OPTIMA

STEP 7

INSTALLERS GUIDE - OPTIMA

STEP 8

INSTALLERS GUIDE - OPTIMA



Secure C-channel to background wall



Attach appropriate size clip to C-channel @ required centres (typically 600mm)



Cut insulation to required length + 10mm to ensure tight fit



Tuck insulation in behind U-channels (floor & ceiling). Fix Isover glasswool by penetrating with clip



Attach clip



Attach appropriate size extension piece to C-channel – depending on existing room heights



Insert base of vertical C-channel into floor U-channel



Extend extension piece until firmly into ceiling U-channel

STEP 9

INSTALLERS GUIDE - OPTIMA

STEP 10

INSTALLERS GUIDE - OPTIMA

STEP 11

INSTALLERS GUIDE - OPTIMA

STEP 12

INSTALLERS GUIDE - OPTIMA

STEP 13

INSTALLERS GUIDE - OPTIMA

STEP 14

INSTALLERS GUIDE - OPTIMA

STEP 15

INSTALLERS GUIDE - OPTIMA

STEP 16

INSTALLERS GUIDE - OPTIMA

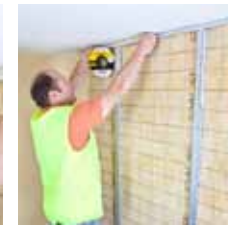


Push vertical stud onto clip

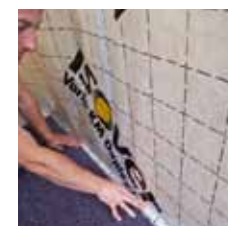
Adjust vertical C-channel until plumb and lock in place by turning lever on plastic clip in a downwards motion



Fix Isover's double sided tape to the face of vertical C-channel



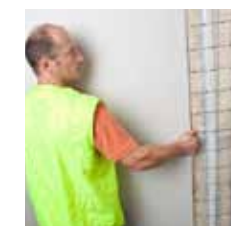
Fix Isover's double sided tape to the face of floor and ceiling U-channel (the use of Vario DS Mastic is also recommended to seal any unwanted gaps)



Fix Vario KM Duplex to face of Optima system



Use Vario KB1 tape to seal membrane at horizontal and vertical overlapping



Fix Gyproc wallboards in line with the recommendations in Gyproc's current Product Manuals

STEP 17

INSTALLERS GUIDE - OPTIMA

STEP 18

INSTALLERS GUIDE - OPTIMA

STEP 19

INSTALLERS GUIDE - OPTIMA

STEP 20

INSTALLERS GUIDE - OPTIMA

STEP 21

INSTALLERS GUIDE - OPTIMA

STEP 22

INSTALLERS GUIDE - OPTIMA

STEP 23

INSTALLERS GUIDE - OPTIMA



Frame out window above and below by fixing C-channel to the wall



Attach clip to C-channel @ required centres (typically 600mm)



Attach Optima Connector Piece to vertical C-channel



Attach C-channel horizontally (pre-cut to suit window width)



Depending on window width, vertical supports may need to be inserted using Optima connector piece (fix base of vertical C-channel into floor U-channel)



Install Vario in line with steps 19-22 and in conjunction with Multi tape SL to seal Vario to window frame



Fix boards to reveal in line with proper site practice

STEP 1

SPECIFIC DETAILS - WINDOWS

STEP 2

SPECIFIC DETAILS - WINDOWS

STEP 3

SPECIFIC DETAILS - WINDOWS

STEP 4

SPECIFIC DETAILS - WINDOWS

STEP 5

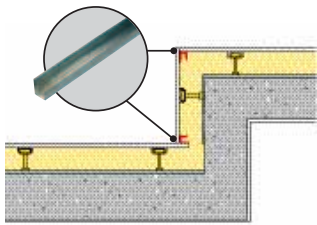
SPECIFIC DETAILS - WINDOWS

STEP 6

SPECIFIC DETAILS - WINDOWS

STEP 7

SPECIFIC DETAILS - WINDOWS



Use U-channel for Inner & Outer corners



Fix U-channel to Gyproc plasterboard



Secure Gyproc plasterboard to vertical U-channel



Secure Gyproc plasterboard in accordance with current Gyproc guidelines



To ensure air tightness continuity, ensure that all penetrations are sealed correctly



Use Vario DS Mastic



Cut Vario Multitape SL into appropriately sized strips



Attach Vario Multitape strips around the penetration as shown

STEP 1

SPECIFIC DETAILS - CORNERING

STEP 2

SPECIFIC DETAILS - CORNERING

STEP 3

SPECIFIC DETAILS - CORNERING

STEP 4

SPECIFIC DETAILS - CORNERING

STEP 1

SPECIFIC DETAILS - PENETRATIONS

STEP 2

SPECIFIC DETAILS - PENETRATIONS

STEP 3

SPECIFIC DETAILS - PENETRATIONS

OPTIMA system

I. Metal frame

1. OPTIMA Floor and ceiling U-channel
2. OPTIMA 500mm extension
3. OPTIMA 2.4m C-channel
4. OPTIMA Clip system: OPTIMA2 Support (for new walls) or OPTIMA Direct Support (70 – 160) (for renovation walls)

II. Insulation

5. ISOVER insulation material, e.g. Standard Performance Comfort roll 35 (standard = 0.035 W/mK) or Ultra Performance Comfort Panel 32 (Ultra = 0.032 W/mK)



III. Air tightness & Moisture control layer (optional)

6. VARIO Protape (double sided)
7. VARIO KM Duplex UV air tightness & moisture control layer
8. VARIO KB1 one-sided adhesive tape
9. VARIO DS Mastic

IV. Facing

10. Gyproc Plasterboard (various specifications of boards available)

OPTIMA System

What you would need to install the OPTIMA System on five metres of wall?

OPTIMA Floor and ceiling U-channel	5 lengths
OPTIMA 2.4m C-channel	10 lengths
OPTIMA 500mm Extension piece	8 pieces
OPTIMA Clip system	10 pieces
ISOVER Insulation material eg Comfort panel 120mm	13.5m ²
Vario DS mastic	2 cartridges of 310ml
Vario KM Duplex UV	15m ²
Vario KB1	5.2m



The sample table to the left gives an indication of the materials needed based on a wall height of 2.7m and spacing of vertical studs at 600mm centres.

About ISOVER:

ISOVER is committed to comfortable living and climate protection. We believe in developing products to create a better, more comfortable world. Already, ISOVER insulation warms and protects 1 in 3 homes in Europe and 1 in 5 in America. Our products save you energy and money; but they also come with a proven environmental pedigree. As Europe's leading producers of high-performance insulation materials, we strive every day to develop increasingly efficient and resource-saving products. We know our responsibility to the earth and continually innovate to deliver the best products to our customers.

Isover Ireland

Unit 14, Park West Industrial Park Dublin 12, Ireland

Tel +353 (0) 1 2575400

Fax +353 (0) 1 4019793

Email info@isover.ie

Web www.isover.ie

