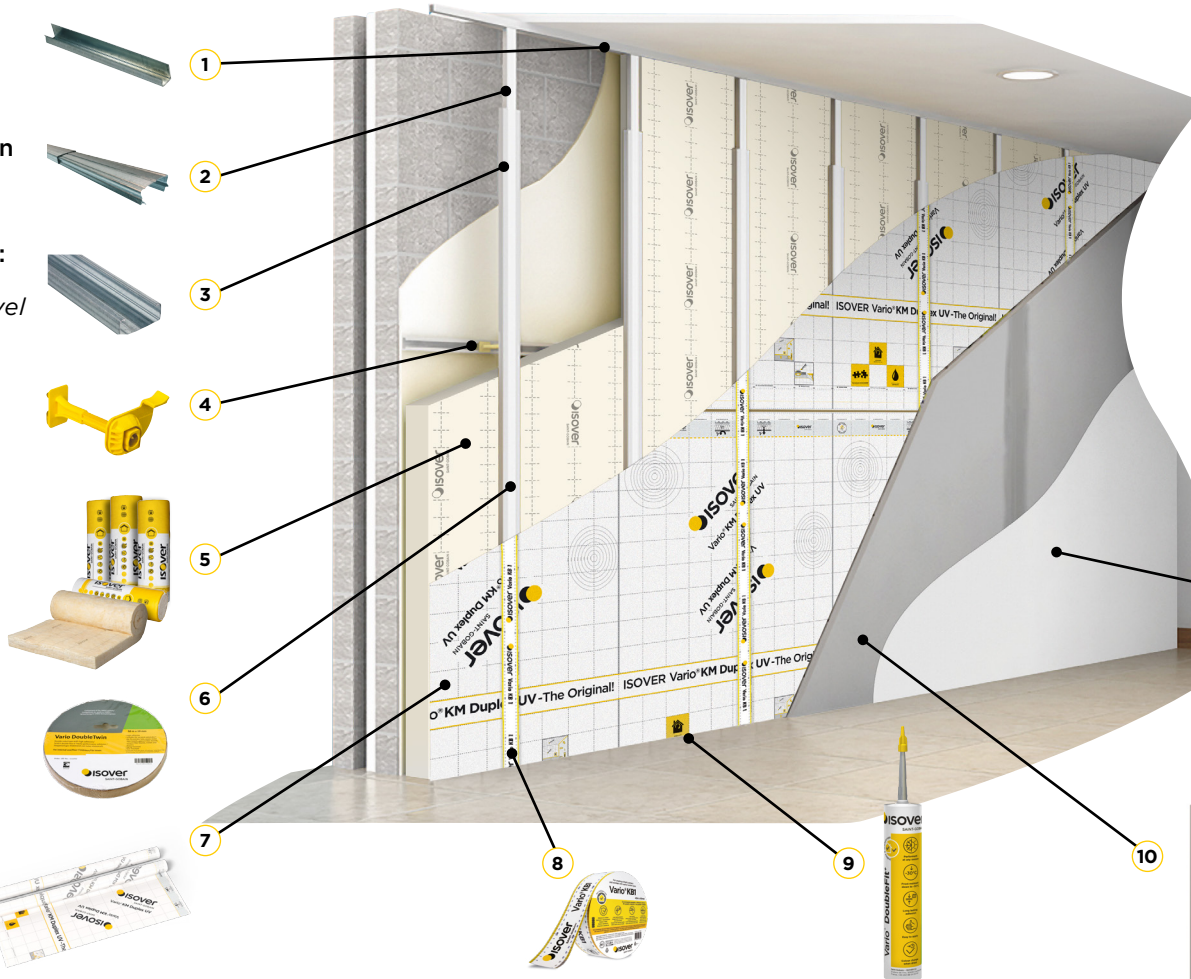


OPTIMA DRY LINING SYSTEM OVERVIEW

I. Metal frame

- 1 Optima Floor and Ceiling U-Channel
- 2 Optima 500mm Extension
- 3 Optima 2.4m C-Channel
- 4 Optima Support Clips for:
 - Reasonably plumb and level Optima Support
 - Very uneven Optima Direct Support (70-160)



II. Insulation

- 5 Isover insulation material, e.g.
 - Comfort 35 Lanaé (0.035W/mK)
 - Comfort Panel 32 (0.032 W/mK)

III. Airtightness and Moisture control layer

- 6 Vario® DoubleTwin
- 7 Vario® KM Duplex UV airtightness and vapour permeable layer
- 8 Vario® KB1 one-sided adhesive tape
- 9 Vario® DoubleFit+ Mastic

IV. Facing

- 10 Gyproc Plasterboard (Various specifications of boards available)
- 11 Decorative Finish (Various specifications of Gyproc Finishing Plasters or Gyproc Taping and Jointing products available).

PROJECT MATERIALS

What you would need to install the Optima System on a 5m × 2.7m wall.

Product	Quantity
1 Optima Floor and Ceiling U-Channel	5 Lengths
2 Optima 500mm Extension	10 Lengths
3 Optima 2.4m C-Channel	8 Pieces
4 Optima Support Clips	10 Pieces
5 Isover insulation material e.g Comfort Panel 32 or Isover Comfort 35 Lanaé	13.5m ²
6 Vario® DoubleTwin	1 roll
7 Vario® KM Duplex UV	15m ²
8 Vario® KB1 Tape	1 roll
9 Vario® DoubleFit+ Mastic	2 Cartridges of 310ml
10 Gyproc Plasterboard	13.5m ²

Preparation Checklist

- Confirm with the design team: substrate suitability, insulation thickness and offset distance required.
- Check levels of background substrate
- Confirm suitable fixing grounds for head and base channel
- Select appropriate fixings for substrate
- Identify correct length(s) of Optima Support Pins
- Gather required tools and materials

OPTIMA INSTALLATION GUIDES

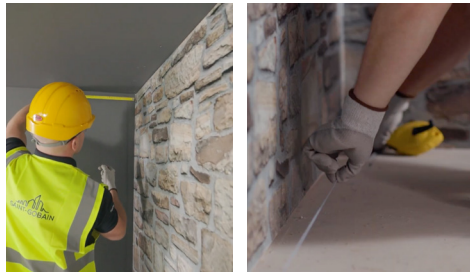
Step by step instructions

Installing Optima	4
Window Framing Installation	7
Window Reveal Detailing	8
Internal & External Corner Detail	9
Grounds	10
Irregular Backgrounds	10
Penetrations	11

Scan the QR Code for the **Optima Dry Lining System Installation Video**



INSTALLING OPTIMA



1 Ceiling, Floor and Perimeter Channel

- Measure and mark the position of the Optima Floor and Ceiling U-Channels. *(Generally measured as the sum of: Insulation thickness + 20mm for channel width)*
- Snap a chalk line at ceiling and at floor level where the Optima U-Channel will be positioned.
- Snap a chalk line at the corresponding vertical edge perimeter. *Cut and fix Optima U-Channels along the chalk line on the ceiling, the floor and the edge perimeter.*



2 Horizontal Mid-Height Optima C-Channel

- Along the full length of the wall fix Optima C-Channel to form a rail with open side facing the room, half way between floor and ceiling (for walls that span up to 2700mm).
- For walls taller than 2700mm, space the horizontal Optima C-Channel rails at maximum 1000mm centres.
- Secure with mechanical fixings appropriate to the substrate at maximum 600mm centres.



3 Support Pins

- Mark the position of the vertical Optima C-Channel centres on floor, ceiling and horizontal rail(s).
- Insert Optima Support Clip pins into the horizontal Optima C-Channel rail(s) at the marked positions.



4 Insulation

- Cut and install Isover Comfort 32 Panels or Comfort 35 Lanaé insulation behind the Optima Floor and Ceiling Channels. Ensure complete wall coverage with no visible gaps between or behind the insulation.
- Optima Support Pins should be pushed through the insulation ready to receive the pre-prepared vertical Optima C-Channel linings.



Contact our technical team for more info

ROI
1800 744480

NI
0845 399 0159

EMAIL
tech.ie@saint-gobain.com

INSTALLING OPTIMA



5 Vertical Optima C-Channels

- Insert the Optima 500mm Extension pieces into the top of each and every vertical Optima C-channel needed in the framework, ensuring that there will be minimum 100mm engagement with the top of each vertical Optima C-Channel when each Optima 500mm Extension piece is fully extended into the Optima Ceiling U-Channel.

- Attach the Optima Support Clips which will receive the Optima Support Clip Pins into the back of each Vertical Optima C-Channel to match the height of the Optima Support Clip pins on the rail(s).
- Ensure the Optima Support Clips are orientated to the open position. *“Open” is when the tab on the Optima Support Clip is perpendicular to the lining channel.*

- Insert each pre-prepared vertical Optima C-Channel lining into the base track where marked and push each vertical Optima C-Channel lining forward so that both halves of the Optima Support Clip(s) engage.



- For each one, slide the Optima 500mm Extension Piece from the top of the vertical Optima C-Channel; lining up and into the Optima Ceiling U-Channel until it fully engages.
- Plumb the Optima C-Channel lining and turn Optima Support Clip to the locked position. *“Locked” is when the Optima Support Clip’s tab is parallel with the lining channel.*



Contact our technical team for more info

ROI
1800 744480

NI
0845 399 0159

EMAIL
tech.ie@saint-gobain.com

INSTALLING OPTIMA



6 Isover Vario Membrane

- Apply Isover Vario DoubleTwin tape to the face of the vertical Optima C-Channel linings. (Approximately 100mm from head and base).



7 Isover Vario Membrane

- Use Isover KB1 tape to seal all overlapping sections of Isover Vario KM Duplex Membrane.



- Seal around perimeter all penetrations as per Isover's recommended detailing principles, using Isover Vario Tapes and Sealants.

- Apply the Isover Vario KM Duplex Membrane across the entire surface of the Optima Metal Framework, overlapping the perimeter by approximately 100mm.
- A 100mm overlap should also be maintained where layers of Isover Vario KM Duplex membrane intersect.



6 Plasterboard Lining

- Select the appropriate type of Gyproc Plasterboard based on project requirements.
- Secure the Gyproc plasterboard to the vertical Optima C-Channel linings as per Gyproc's current recommendations.



6 Decorative Finish

- Prepare the surface for direct decoration using a Gyproc Finishing Plaster or a Gyproc Taping and Jointing system applied in accordance with Gyproc's current recommendations.



WINDOW FRAMING INSTALLATION



1 Horizontal C-Channel

- Install horizontal Optima C-Channel rails above and below window aperture extending approximately 300mm beyond window edges.



2 Support Pins

- Insert Optima Support Pins into the horizontal Optima C-Channel rails above and below the window aperture, positioned so as to:
 - *Align vertical Optima C-Channels to form the sides of the reveal framework.*
 - *At the required Gyproc plasterboard fixing centres (typically 600mm centres).*



3 Insulation

- Cut and install Isover Comfort or Isover Metac insulation around the window aperture, pushing the insulation onto the Optima Support Clip pins to hold it in place.



4 Vertical C-Channel

- Install vertical Optima C-Channels to form each side of the reveal framework.



5 Cut Horizontal C-Channel

- Measure and cut the horizontal Optima C-Channels which will form the head and base of reveal framework.



6 Optima Connector Clips

- Using Optima Connector Clips, attach the horizontal Optima C-Channel to the vertical Optima C-Channels forming each side of the reveal framework at the appropriate height to align with your window detailing strategy.



7 Add Vertical C-Channel

- Where required at Gyproc plasterboard fixing centres, install additional vertical C-Channels. *Install by fully engaging the vertical Optima C-Channel into the head or base channel and using Optima Connector Clips to secure to the reveal framework.*



NOTE

Framework positioning must account for chosen reveal strategy and available space.

WINDOW REVEAL DETAILING

1 Determine Space

Determine available space around the window, as this will dictate your approach.

OPTION 1

Limited Space

- If space is restricted, the project team may decide on an alternative insulation and boarding strategy around the window reveal.
- This will need to be determined by the project team prior to framing, as the framing will need to be sized to suit.

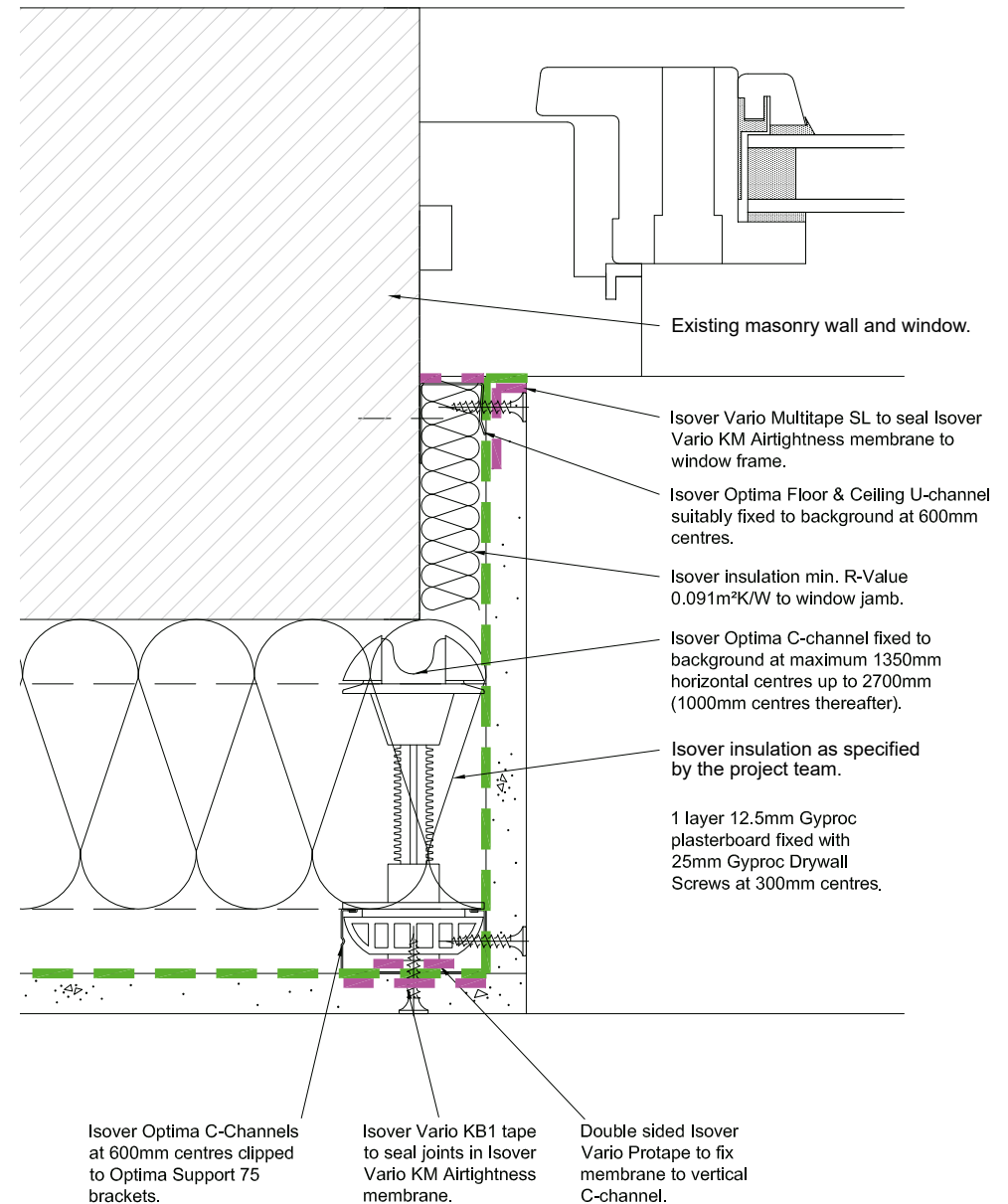
2 Important Considerations

- Calculate the offset created by the returned Optima framing plus board thickness to determine final positioning.
- Ensure comprehensive insulation coverage and minimize thermal bridging at all window interfaces.

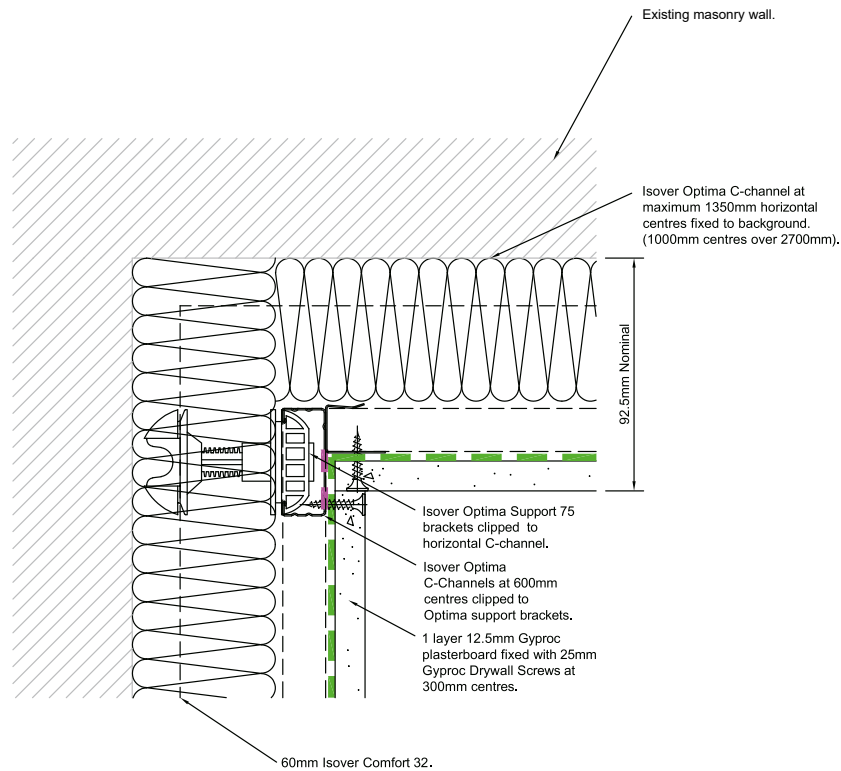
OPTION 2

Adequate Space

- When sufficient space exists, install Optima Floor and Ceiling U-Channel around the window perimeter.
- Use short lengths of Optima C-Channel fitted into the Floor and Ceiling Channels.
- Install Optima Connector Clips (bent to 90 degrees) to affix the reveal to the framework.
- This creates support for window reveal boarding and conceals mineral wool insulation.



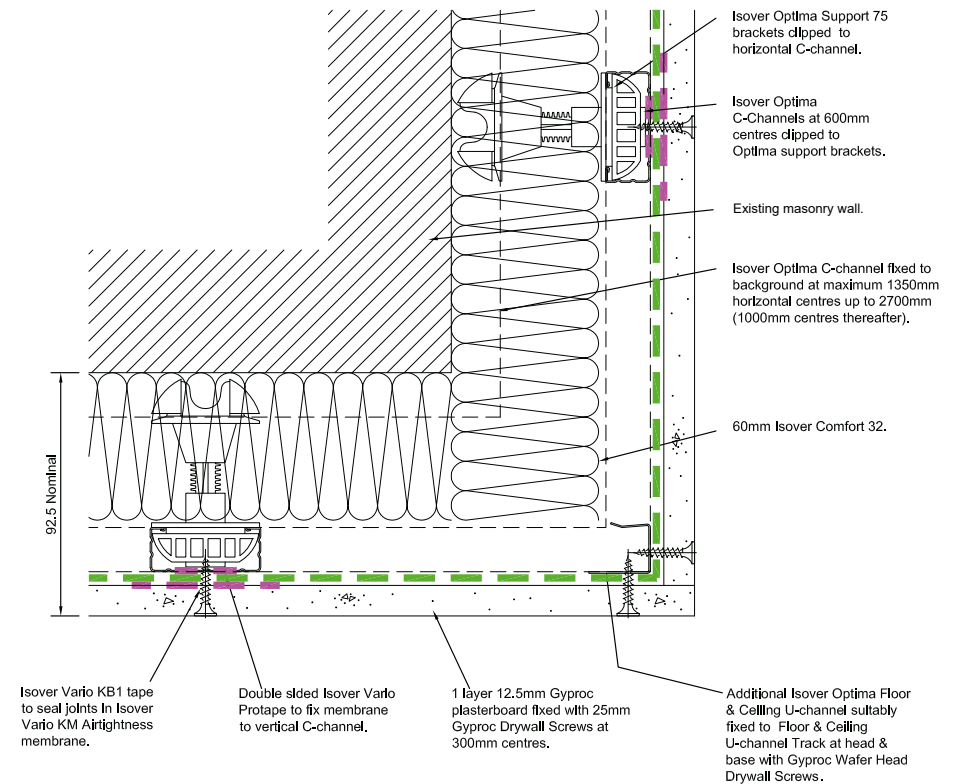
INTERNAL CORNER DETAIL



1 Internal Corner Detail

- Install internal corner as per detail above, fixing Optima U-Channel to vertical Optima C-Channel as shown to create fixing grounds for Gyproc Plasterboard.

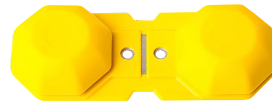
EXTERNAL CORNER DETAIL



1 External Corner Detail

- At the corner, install an additional Isover Optima Floor and Ceiling U-Channel fixed to the Optima Floor and Ceiling U-Channel Track at the head and base with Gyproc Wafer Head Drywall Screws to provide suitable fixing grounds for the Gyproc plasterboard surface lining.

GROUNDS

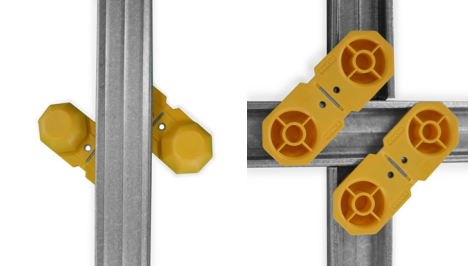


Optima Connector clips can be used in the following ways to create fixing grounds within the Optima system:



1 Socket Boxes

- Fold Optima Connector clips back on themselves, clip them to the back of two vertical Optima C-channel linings to support a horizontal Optima C-channel rail to provide grounds for a socket box.



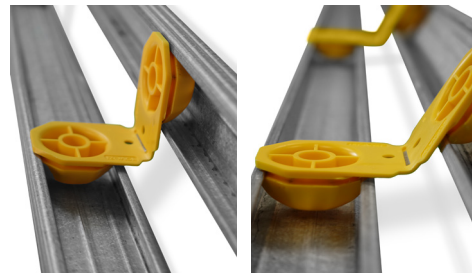
2 Horizontal Fixing Support Rail

- Insert two Optima Connector Clips into each vertical Optima C-Channel lining—one clip on top of the other, with one protruding left and one right. Turn both clips 45 degrees to align them. Cut Horizontal Optima C-Channel rails to size and clip them into the connector clips between Optima C-Channel linings to form a continuous rail.



3 Double Studs

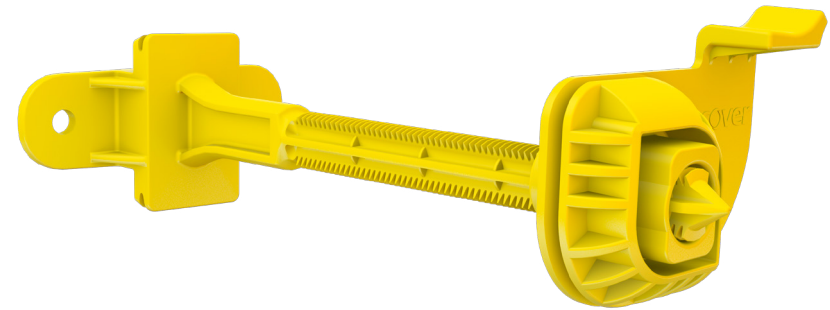
- Position Optima Connector clips at the top and bottom of a vertical Optima C-Channel lining and clip a parallel vertical Optima C-Channel into place directly beside it.



4 Angled Connections

- A double stud arrangement where Optima Connector Clips are bent to specific angles to support features such as dormer windows.

IRREGULAR BACKGROUNDS

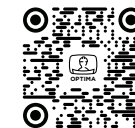


1 Direct Fixing Clips

- If the background substrate is uneven or unsuitable for the Optima C-Channel Support Rail, use Optima Direct Fixing Clips to secure the framework:
 - *These clips can be cut to different lengths to accommodate varying distances from the wall.*
 - *Position clips at maximum 600mm vertical centres. Use appropriate mechanical fixings to secure clips to the substrate.*



Scan the QR Code for the **Optima Dry Lining System Installation Video**



PENETRATIONS



1 Locate

- To ensure airtightness continuity, ensure that all penetrations are sealed correctly.



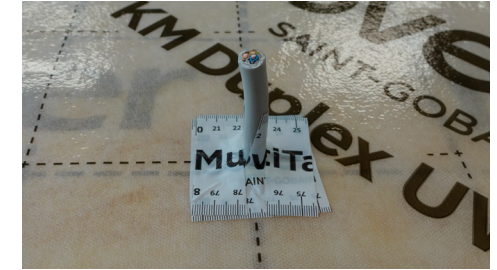
2 Mastic

- Seal around the hole with Vario® DoubleFit+ Mastic.



3 Tape

- Attach Vario® Multi Tape SL+ strips around the penetration as shown.



- Attach Vario® Multi Tape SL+ strips around the penetration as shown.

For more information or training on the Optima Dry Lining System, please visit isover.ie; contact our Technical team; check our Technical Academy courses or speak to your local builders merchant.

Please note that existing walls must be assessed by the project team in regard to weather protection, render, damp, intermediate floor joists and other conditions as may affect the level of insulation being considered. Contact our technical department for further information and to obtain copies of the Optima certified thermal bridge library, Wufi report (1d), user guide and product literature.

CONTACT DETAILS FOR FURTHER INFORMATION

Email:
tech.ie@saint-gobain.com

Free Phone:
ROI 1800 744480 | NI 0845 3990159

Publish date: April 2026

ISOVER reserves the right to revise product specifications without notice. The information in this document was correct to the best of our knowledge at the time of publication. It is the user's responsibility to ensure that it remains current prior to use. The information in this document is for guidance only and should not be read in isolation. Users should read and familiarise themselves with all the information contained in this document and ensure that they are fully conversant with the products and systems being used, before subsequent specification or installation. For a comprehensive and up to date library of information, visit isover.ie



ISOVER Ireland

Unit 4, Kilcarbery Business Park,
Nangor Road, Dublin 22
D22 R2Y7

Telephone: 01 629 8400

Email: info@isover.ie

www.isover.ie