

Optima Dry Lining System

High Performing, Easy & Quick

INSTALLER GUIDE

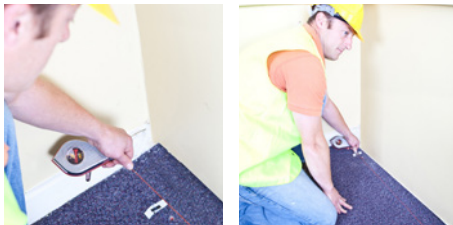


ISOVER
SAINT-GOBAIN

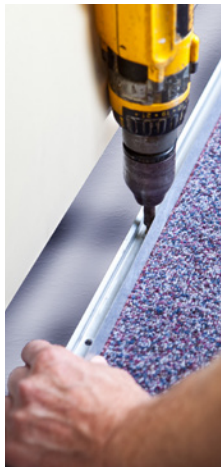
Sustainable Insulation Solutions



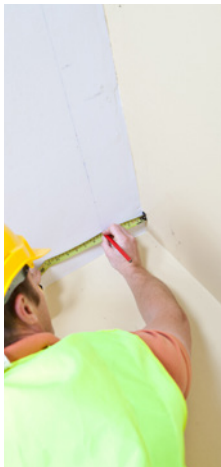
Floor
Measure distance out from wall – thickness of the insulation being used + 20mm



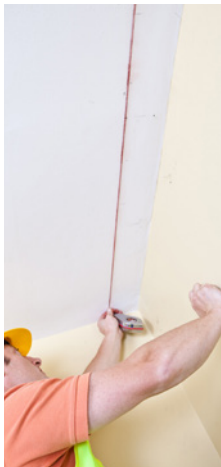
Use chalk line to mark out line for floor U-channel – line marked is to front of U-channel



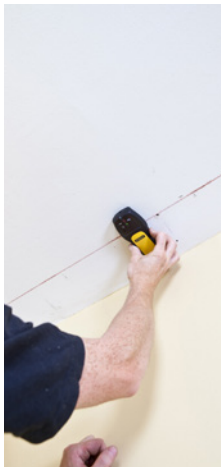
Fix to floor through pre-drilled holes in U-channel



Ceiling
Measure distance out from wall – thickness of the insulation being used + 20mm



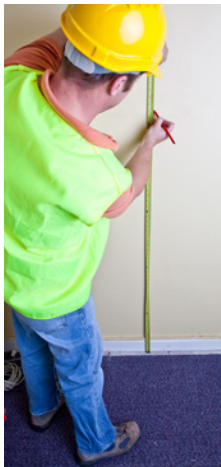
Use chalk line to mark out line for floor U-channel – line marked is to front of U-channel



Ensure sufficient grounds are established



Fix to ceiling through pre-drilled holes in U-channel



Measure 1.35m from floor

STEP 1

INSTALLERS GUIDE - OPTIMA

STEP 2

INSTALLERS GUIDE - OPTIMA

STEP 3

INSTALLERS GUIDE - OPTIMA

STEP 4

INSTALLERS GUIDE - OPTIMA

STEP 5

INSTALLERS GUIDE - OPTIMA

STEP 6

INSTALLERS GUIDE - OPTIMA

STEP 7

INSTALLERS GUIDE - OPTIMA

STEP 8

INSTALLERS GUIDE - OPTIMA



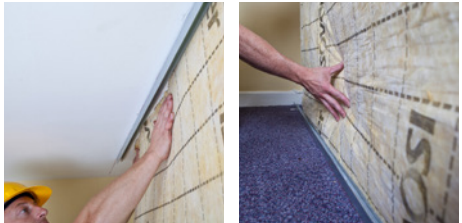
Secure C-channel to background wall



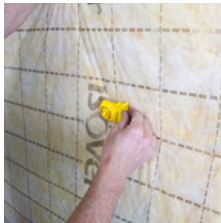
Attach appropriate size clip to C-channel @ required centres (typically 600mm)



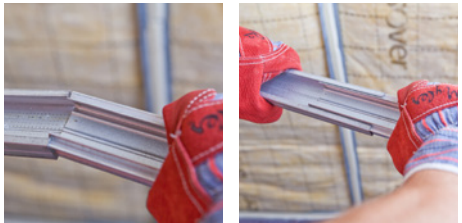
Cut insulation to required length + 10mm to ensure tight fit



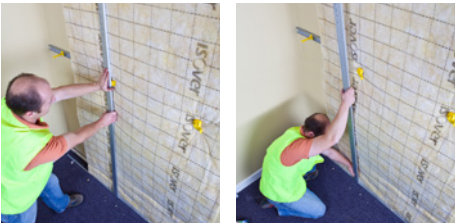
Tuck insulation in behind U-channels (floor & ceiling). Fix ISOVER glasswool by penetrating with clip



Attach clip



Attach appropriate size extension piece to C-channel – depending on existing room heights



Insert base of vertical C-channel into floor U-channel



Extend extension piece until firmly into ceiling U-channel

STEP 9

INSTALLERS GUIDE - OPTIMA

STEP 10

INSTALLERS GUIDE - OPTIMA

STEP 11

INSTALLERS GUIDE - OPTIMA

STEP 12

INSTALLERS GUIDE - OPTIMA

STEP 13

INSTALLERS GUIDE - OPTIMA

STEP 14

INSTALLERS GUIDE - OPTIMA

STEP 15

INSTALLERS GUIDE - OPTIMA

STEP 16

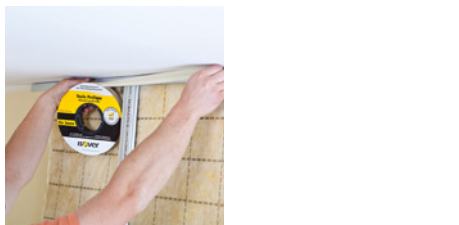
INSTALLERS GUIDE - OPTIMA



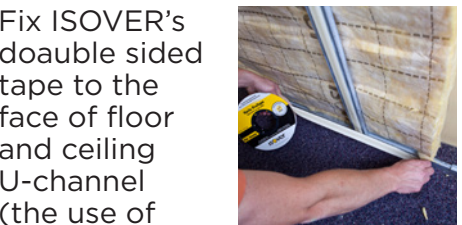
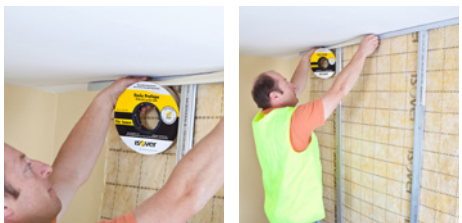
Push vertical stud onto clip



Adjust vertical C-channel until plumb and lock in place by turning lever on plastic clip in a downwards motion



Fix ISOVER's double sided tape to the face of vertical C-channel



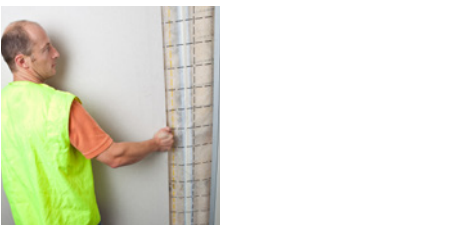
Fix ISOVER's doable sided tape to the face of floor and ceiling U-channel (the use of Vario® DS Mastic is also recommended to seal any unwanted gaps)



Fix Vario® KM Duplex to face of Optima system



Use Vario® KB1 tape to seal membrane at horizontal and vertical overlapping



Fix Gyproc Plasterboard in line with the manufacturer's recommendations

Specific Details Overleaf

STEP 17

INSTALLERS GUIDE - OPTIMA

STEP 18

INSTALLERS GUIDE - OPTIMA

STEP 19

INSTALLERS GUIDE - OPTIMA

STEP 20

INSTALLERS GUIDE - OPTIMA

STEP 21

INSTALLERS GUIDE - OPTIMA

STEP 22

INSTALLERS GUIDE - OPTIMA

STEP 23

INSTALLERS GUIDE - OPTIMA



Frame out window above and below by fixing C-channel to the wall



Attach clip to C-channel @ required centres (typically 600mm)



Attach Optima Connector Piece to vertical C-channel



Attach C-channel horizontally (pre-cut to suit window width)



Depending on window width, vertical supports may need to be inserted using Optima connector piece (fix base of vertical C-channel into floor U-channel)



Install Vario® in line with steps 19-22 and in conjunction with Multi Tape SL to seal Vario® to window frame



Fix boards to reveal in line with proper site practice

STEP 1 SPECIFIC DETAILS - WINDOWS

STEP 2 SPECIFIC DETAILS - WINDOWS

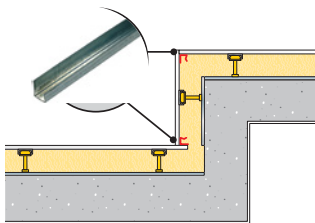
STEP 3 SPECIFIC DETAILS - WINDOWS

STEP 4 SPECIFIC DETAILS - WINDOWS

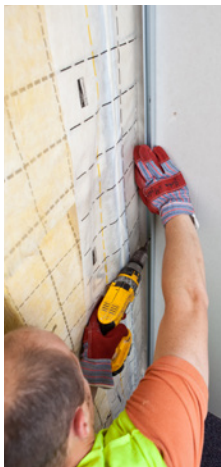
STEP 5 SPECIFIC DETAILS - WINDOWS

STEP 6 SPECIFIC DETAILS - WINDOWS

STEP 7 SPECIFIC DETAILS - WINDOWS



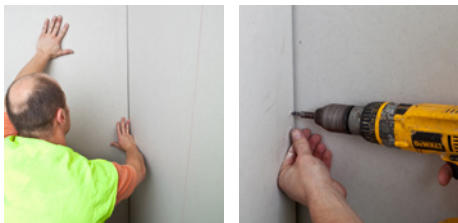
Use U-channel for Inner & Outer corners



Fix U-channel to Gyproc Plasterboard



Secure Gyproc Plasterboard to vertical U-channel



Secure Gyproc Plasterboard in accordance with current Gyproc guidelines



To ensure airtightness continuity, ensure that all penetrations are sealed correctly



Use Vario® DS Mastic



Cut Vario® Multi Tape SL into appropriately sized strips



Attach Vario® Multi Tape strips around the penetration as shown

STEP 1 SPECIFIC DETAILS - CORNERING

STEP 2 SPECIFIC DETAILS - CORNERING

STEP 3 SPECIFIC DETAILS - CORNERING

STEP 4 SPECIFIC DETAILS - CORNERING

STEP 1 SPECIFIC DETAILS - PENETRATIONS

STEP 2 SPECIFIC DETAILS - PENETRATIONS

STEP 3 SPECIFIC DETAILS - PENETRATIONS

ISOVER

About ISOVER:
ISOVER is committed to comfortable living and climate protection. We believe in developing products to create a better, more comfortable world. Already, ISOVER insulation warms and protects 1 in 3 homes in Europe and 1 in 5 in America. Our products save you energy and money, but they also come with a proven environmental pedigree. As Europe's leading producers of high-performance insulation materials, we strive every day to develop increasingly efficient and resource-saving products. We know our responsibility to the earth and continually innovate to deliver the best products to our customers.

SAINT-GOBAIN

ISOVER Ireland
Unit 4, Kilcarbery Business Park,
Nangor Road, Dublin 22
Tel: +353 (0)1 6298400
Email: info@isover.ie
www.isover.ie

OPTIMA system

- I. Metal frame**
 - OPTIMA Floor and ceiling U-channel
 - OPTIMA 500mm extension
 - OPTIMA 2.4m C-channel
 - OPTIMA Clip system: OPTIMA2 Support (for new walls) or OPTIMA Direct Support (70 - 160) (for renovation walls)
- II. Insulation**
 - ISOVER insulation material, e.g. Standard Performance Comfort 35 (Standard = 0.035W/mK) or Ultra Performance Comfort Panel 32 (Ultra = 0.032 W/mK)



- III. Air tightness & Moisture control layer**
 - VARIO Protape (double sided)
 - VARIO KM Duplex UV airtightness & moisture control layer
 - VARIO KB1 one-sided adhesive tape
 - VARIO DS Mastic

- IV. Facing**
 - Gyproc Plasterboard (various specifications of boards available)

OPTIMA System

What you would need to install the OPTIMA System on five metres of wall?

OPTIMA Floor and ceiling U-channel	5 lengths
OPTIMA 2.4m C-channel	10 lengths
OPTIMA 500mm Extension piece	8 pieces
OPTIMA Clip system	10 pieces
ISOVER Insulation material eg Comfort panel 120mm	13.5m ²
Vario® DS mastic	2 cartridges of 310ml
Vario® KM Duplex UV	15m ²
Vario® KB1	5.2m



The sample table to the left gives an indication of the materials needed based on a wall height of 2.7m and spacing of vertical studs at 600mm centres.

Optima Dry Lining System

High Performing, Easy & Quick

INSTALLER GUIDE



Colour coding

- INSTALLERS GUIDE - OPTIMA Step 1-23**
- SPECIFIC DETAILS - WINDOWS Step 1-7**
- SPECIFIC DETAILS - CORNERING Step 1-4**
- SPECIFIC DETAILS - PENETRATIONS Step 1-3**

Start Step 1 Installer Guide





About ISOVER:

ISOVER is committed to comfortable living and climate protection. We believe in developing products to create a better, more comfortable world. Already, ISOVER insulation warms and protects 1 in 3 homes in Europe and 1 in 5 in America. Our products save you energy and money; but they also come with a proven environmental pedigree. As Europe's leading producers of high-performance insulation materials, we strive every day to develop increasingly efficient and resource-saving products. We know our responsibility to the earth and continually innovate to deliver the best products to our customers.



ISOVER Ireland

**Unit 4, Kilcarbery Business Park,
Nangor Road, Dublin 22**

Tel: +353 (0)1 6298400

Email: info@isover.ie

www.isover.ie